



ICMM
International Council
on Mining & Metals

INSTITUTO TECNOLÓGICO VALE



Munasinghe Institute for Development
making development more sustainable (MDMS)

Symposium on Sustainable Development: New Dimensions for Society & Business

Espaço Tom Jobim, Jardim Botânico, Rio de Janeiro, 18 June 2012

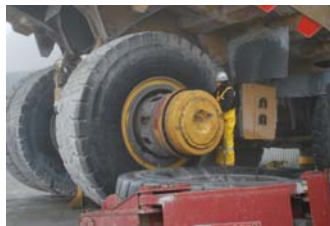
ICMM
International Council
on Mining & Metals

ICMM: Mining and its contribution to Sustainable Development

Ben Davies
Sustainable Development: New Dimensions for Society & Business
Rio de Janeiro, 18th June 2012

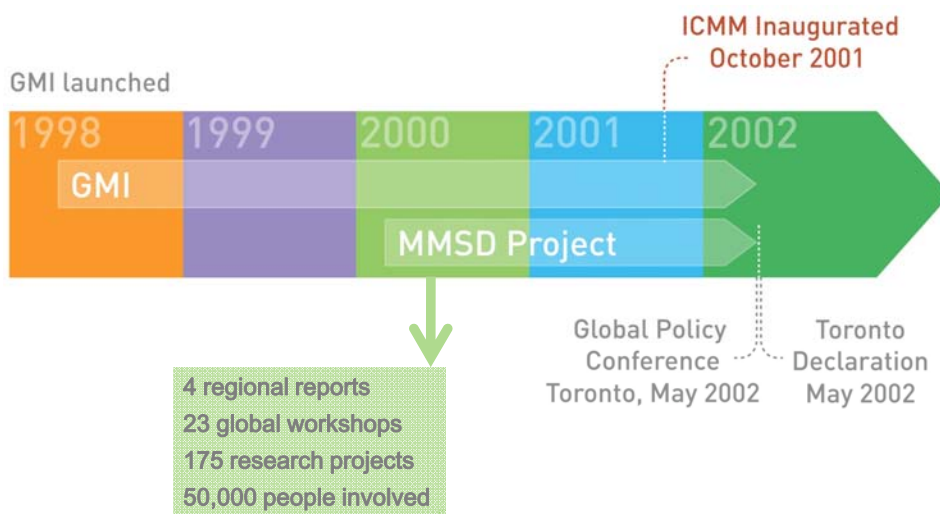


Where does ICMM come from?



www.icmm.com

Where does ICMM come from?



www.icmm.com

Our vision and its fundamental implication



Our role: a catalyst for improving environmental and social performance in the mining and metals industry

www.icmm.com

ICMM at a glance



CEO led

**22
Company
members**

**34
Association
members**



**Over 800 sites
in 62 countries**

www.icmm.com

ICMM member companies



ICMM member commitments

10 principles for sustainable development + 6 position statements

1. Implement ethical business practices and apply good corporate governance
2. Integrate SD in corporate decision-making
3. Uphold fundamental human rights
4. Manage risks based on sound science
- 5/6. **Improve environment, health and safety performance continuously**
7. Conserve biodiversity & contribute to integrated land use planning
8. Encourage a life cycle approach to materials management
9. Contribute to community development
10. Publicly report, independently assure and engage openly and transparently

Mining and Protected Areas
 Mining: Partnerships for Development
 Climate Change
 Mining and Indigenous Peoples
 Mercury Risk Management
 Transparency of Mineral Revenues

www.icmm.com

Enhanced transparency and accountability

Robust entry criteria and process



Clear performance expectations



Reporting



www.icmm.com

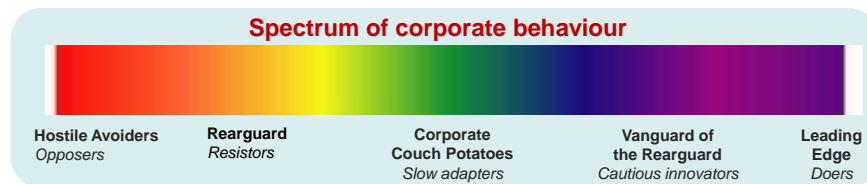
The value proposition of enhanced transparency and accountability



www.icmm.com

Leading companies...

- Systematically review their SD policy provisions... and address gaps, they walk the talk
- Implement robust, inclusive approaches to identifying material SD risks and opportunities... with stakeholders
- Establish ambitious but realistic targets and objectives
- Ensure internal control measures (systems and approaches) are fit for purpose to deliver on commitments
- Engage with their stakeholders on key challenges and publicly report on progress



www.icmm.com

Member associations

Americas

Cámara Argentina de Empresarios Mineros
 Cámara Asomineros Andi - Colombia
 Cámara Minera de Venezuela
 Cámara Minera de México
 Consejo Minero de Chile A.G.
 Instituto Brasileiro de Mineração - Brazil
 Mining Association of Canada
 National Mining Association - USA
 Prospectors and Developers Association of Canada
 Sociedad Nacional de Minería - Chile
 Sociedad Nacional de Minería, Petróleo y Energía – Perú

Africa

Chamber of Mines of South Africa
 Chamber of Mines of Zambia
 Ghana Chamber of Mines
 Mining Industry Associations of Southern Africa

Europe

Eurometaux
 Euromines

Asia-Pacific

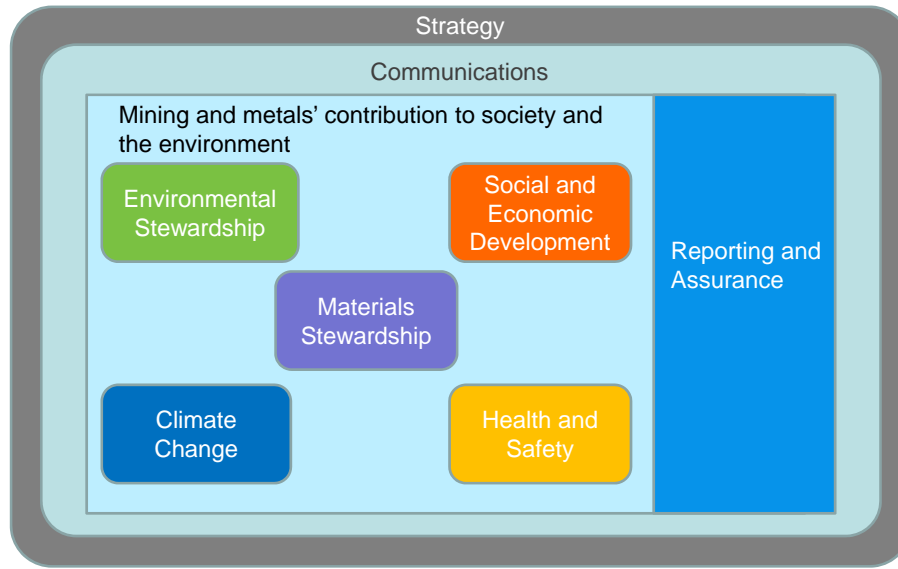
Chamber of Mines of the Philippines
 Federation of Indian Mineral Industries
 Japan Mining Industry Association
 Minerals Council of Australia

Commodity Associations

Cobalt Development Institute
 International Aluminium Institute
 International Copper Association
 International Iron Metallurgy Association
 International Lead Association
 International Manganese Institute
 International Molybdenum Association
 International Wrought Copper Council
 International Zinc Association
 ITRI
 Nickel Institute
 World Coal Association
 World Gold Council

www.icmm.com

Our work



www.icmm.com

Publications



www.icmm.com

Rio+20, 2012.... How are we doing?

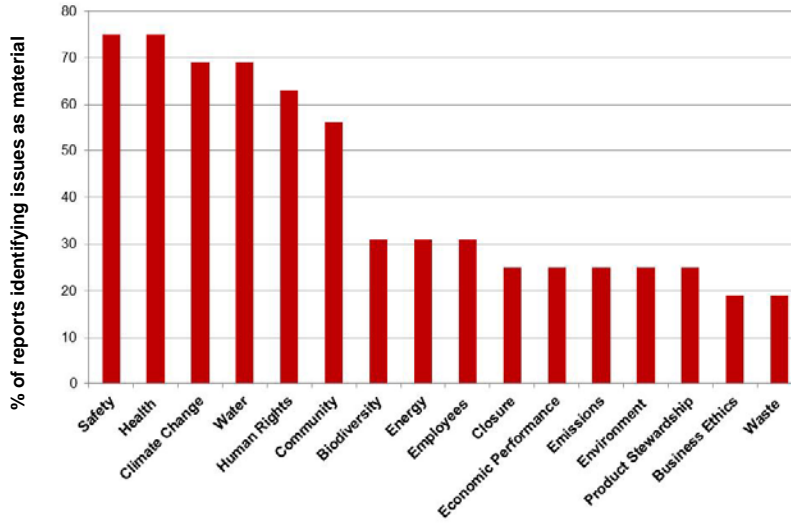
www.icmm.com

Reality check: key trends

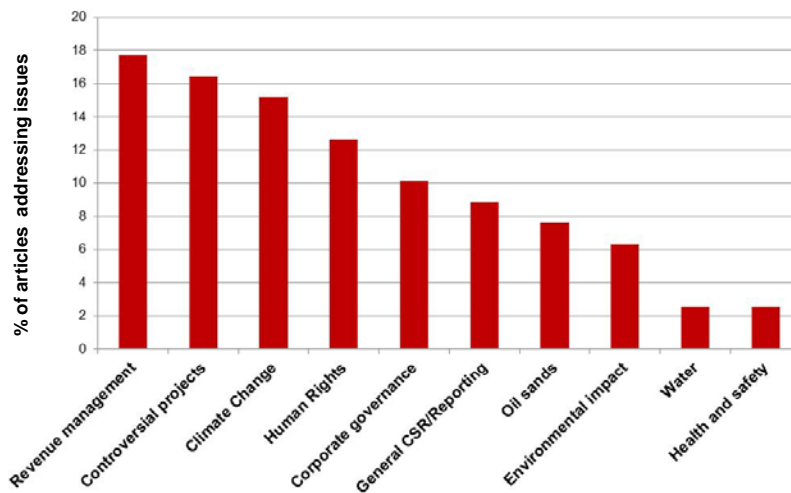
- 1 Increasing public concerns** (climate change, water, human rights, biodiversity, corruption and transparency, workplace fatalities, distribution of economic benefits of mining, poverty reduction, indigenous peoples' role in decision-making)
- 2 Intensifying political struggles over distribution of resource rents**
- 3 Increased emphasis on corporate social and environmental practices**
- 4 Increased NGO campaigning on a range of issues** (community consent, ethical sourcing, biodiversity, energy minerals, chemicals management)
- 5 Increasing complexity and breadth of issues facing the industry**
- 6 Growing recognition that no single interest can address issues effectively** (growing need for multi-interest collaboration)

16

Material issues – Member 2011 SD reports



Top ten investor 'issues' related to mining*



* Based on analysis of all mining related stories on Responsible Investor website for 2011

IIED study – MMSD+10,



www.icmm.com

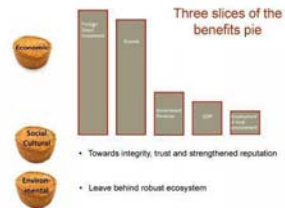
ICMM: Mining's Contribution to Sustainable Development



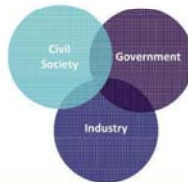
We need strengthened company action, government regulation and public support that:

1. Recognizes the full range of benefits, costs, risks and responsibilities over both short and long term
2. Shares responsibility through collaboration, encourages transparency and accountability
3. Is rooted in a drive for effectiveness and efficiency
4. Reflects vitality, strength, innovation and pride

Understand the contribution



Action through collaboration



The differences in how we all see things



www.icmm.com

For further information:

www.icmm.com

[@icmm_com](https://twitter.com/icmm_com) 

info@icmm.com